

WANDSWORTH BOROUGH COUNCIL

REGENERATION AND COMMUNITY SAFETY OVERVIEW AND SCRUTINY  
COMMITTEE – 11TH FEBRUARY 2010

Report by the Chief Executive and Director of Administration on behalf of the officers concerned on the overall pattern of crime in the Putney and Roehampton areas.

SUMMARY

Background: Information on crime statistics and crime patterns are presented to the Committee for the third time looking at the local area involving the Putney and Roehampton Safer Neighbourhood sector. This sector includes the following wards – Thamesfield, Fairfield, Southfields, West Hill, East Putney, West Putney and Roehampton. The report covers the most up-to-date data available for the current financial year (April – November 2009).

Policy: N/A

Issues: The Putney & Roehampton sector crime levels are consistently the lowest crime levels of the three neighbourhood sectors in Wandsworth. Long-term trends show significant reductions across most key categories with the exception of violence against the person. For the current financial year to date, the Putney and Roehampton sector is showing a slight increase in crime when compared to the same period last year, although this is largely due to a spike in recorded offences earlier in the year.

Robbery, violence against the person and theft & handling offences shows the most significant increases within the Putney and Roehampton sector in the financial year to date. However, in the short-term, significant reductions are evident for these categories in quarter three of 2009/10. Residential burglary is showing a decrease in the sector, despite the spike in recorded offences between April – June 2009, and an increase in other sectors across Wandsworth. Sexual offences and drug offences have also decreased when compared to the same period last year.

Performance across the seven wards within the Putney and Roehampton sector varies. A reduction in all crime was recorded in West Putney and Roehampton, with particular improvements in motor vehicle crime, theft & handling and drug offences in these wards. The remaining five wards saw an increase in some of the other key categories including robbery, violence against the person or criminal damage, although again recent trends are showing improvement in these areas.

Proposal: This report is for information and dissemination. There are no new proposals.

Director of Finance Comments: N/A

Supporting Information: N/A

Conclusion: Crime in the Putney and Roehampton sector is showing consistent downward long-term trends across most crime categories as well as total notifiable offences. Although this year has seen a slight increase in crime, largely attributed to the recession, significant

## ***Crime patterns in the Putney & Roehampton area***

improvements are evident throughout the latter months of 2009. A large proportion of crime in the Putney and Roehampton sector is recorded in one of the two town centres in the area. The Strategic Assessment 2009/10 identifies that tackling crime in Wandsworth's town centres, particularly during a period of recession is important. Therefore more emphasis will be placed on tackling town centre crime and disorder through the Partnership Plan 2009/10, which includes Putney and Wandsworth town centres.

### **GLOSSARY**

PCSO:	Police Community Support Officer
PIB:	Performance Information Bureau
SNT:	Safer Neighbourhood Team
POG:	Partnership Operations Group
ASB:	Anti Social Behaviour
TNO:	Total Notifiable Offence

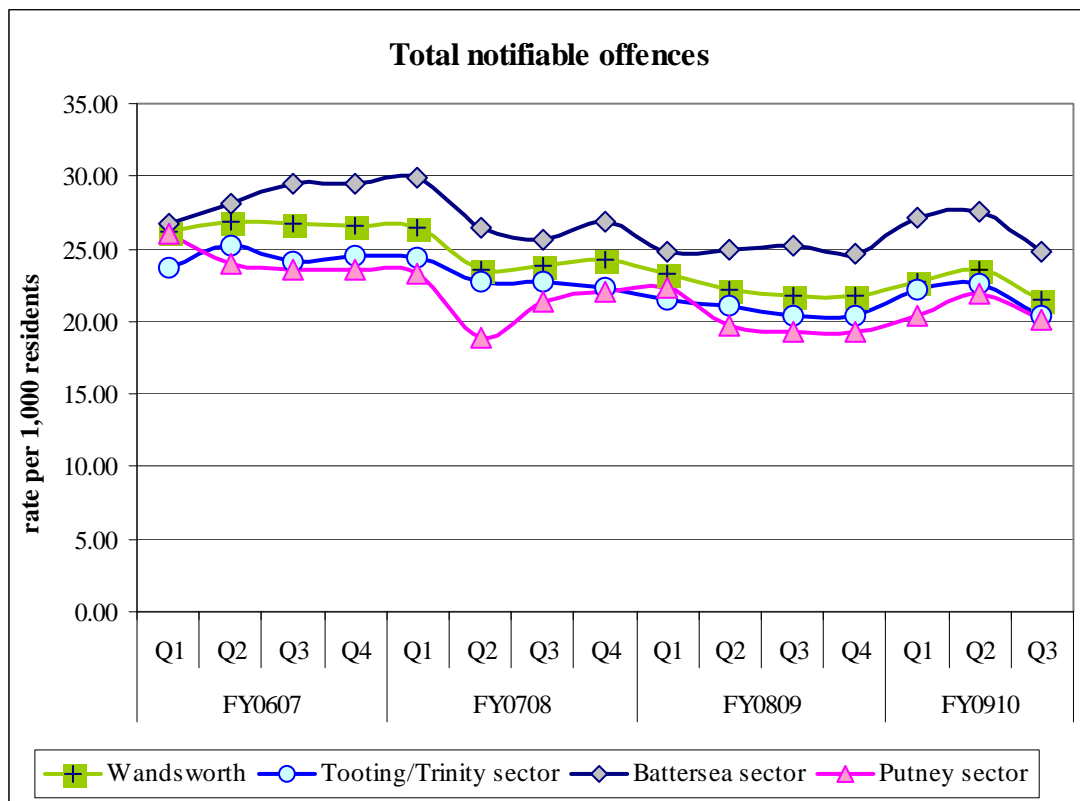
1. **Recommendations.** The Regeneration and Community Safety Overview and Scrutiny Committee are requested to receive this report for information. No decisions are required on it by the Council, the Executive, or the regulatory and other committees. However, if the Regeneration and Community Safety Overview and Scrutiny Committee approve any views, comments or additional recommendations on this report, these will be submitted to the Executive and / or the appropriate regulatory and other committee's for consideration.
2. **Introduction.** The annual strategic assessment 2009/10 revealed the trends and crime patterns on a Borough level and helped in determining the strategic priorities to be tackled by the Wandsworth Crime and Disorder Reduction Partnership (Paper No. 10-41). In this report, crime statistics are presented to the Committee on a local and smaller scale, alongside the local initiatives deployed by the Police and the Council. This is the third report to be based geographically, following on from the Tooting / Trinity and Battersea sector reports.
3. **Area covered.** The area selected for the compilation of the crime statistics as well as the geographical and temporal profiles includes the following wards – Thamesfield, Fairfield, Southfields, West Hill, East Putney, West Putney and Roehampton. This large area has been chosen based on the SNT sectors. This area is called the Putney and Roehampton Neighbourhood Sector. Throughout the main body of this report the area will be referred to as the 'Putney Sector.'
4. **Analysis of crime incidents.** The data used are taken from two sources. The number of confirmed offences is based on information provided by the Metropolitan Police Performance Information Bureau (PIB). PIB data reflect the number of incidents in Wandsworth and in each ward showing the number of individual victims that may be linked to each offence. The second source of data is the Crime Report Information System, which provides local data and is a record of the allegation only. This data unlike the PIB data is not cleansed and still in a raw format. It does have the advantage, however, of detailing the timeframe and the location of local street crime incidents.
5. **Benchmarking.** The Putney sector as defined in paragraph -3- will be benchmarked against the two other Safer Neighbourhood sectors in Wandsworth. The Tooting and Trinity sector includes Balham, Bedford, Earlsfield, Furzedown, Graveney, Nightingale, Tooting and

*Crime patterns in the Putney & Roehampton area*

Wandsworth Common and the Battersea sector which includes all other remaining wards – Latchmere, Northcote, Queenstown, St. Mary’s Park and Shaftesbury.

6. **Time period.** Most analysis throughout this report is based on the period April to November 2009, in order to provide the most up to date statistics available for the current financial year. Some analysis includes December 2009 where available, such as anti-social behaviour data. Some parts of the report provide analysis based on financial quarters, in which case figures for quarter 3 of 2009/10 are provisional, as figures for December 2009 have been forecast.
7. **Volume of crimes.** 6183 offences were recorded between April and November 2009 in the Putney sector. This compares to 6064 for the same period in 2008, a small increase of 2%. This compares to a borough wide increase of 2%.
8. Figure 1 shows the quarterly trends for all crime (total notifiable offences) recorded in each sector and in Wandsworth per 1,000 residents. Figures for quarter 3 of 2009/10 are provisional, as December’s figures have been forecast using an average from October and November, although raw data suggests December crime will infact be lower than the average. In the long-term the chart shows that the Putney sector consistently has the lowest rate of crime per 1,000 residents, slightly below the rate of crime in the Tooting/Trinity sector and significantly below the rate of crime in the Battersea sector. In the short-term crime across all sectors showed a substantial increase during the first two quarters of the current financial year. However, provisional figures for quarter 3 2009/10 show a steep drop in crime, with a rate of just over 20 crimes per 1,000 residents in the Putney sector.

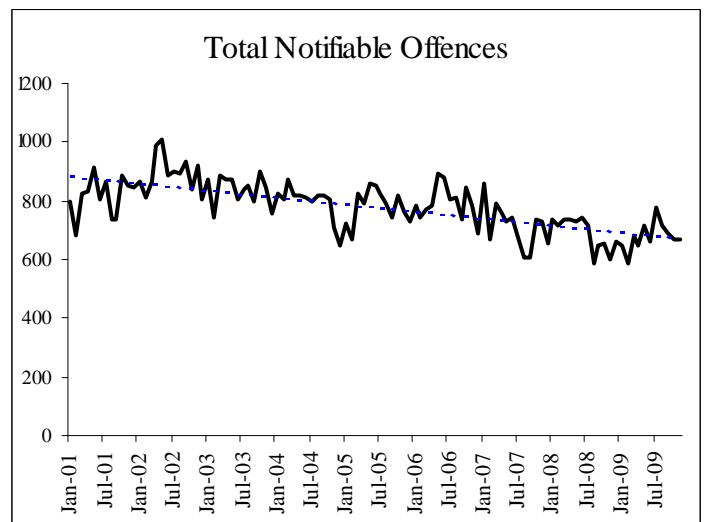
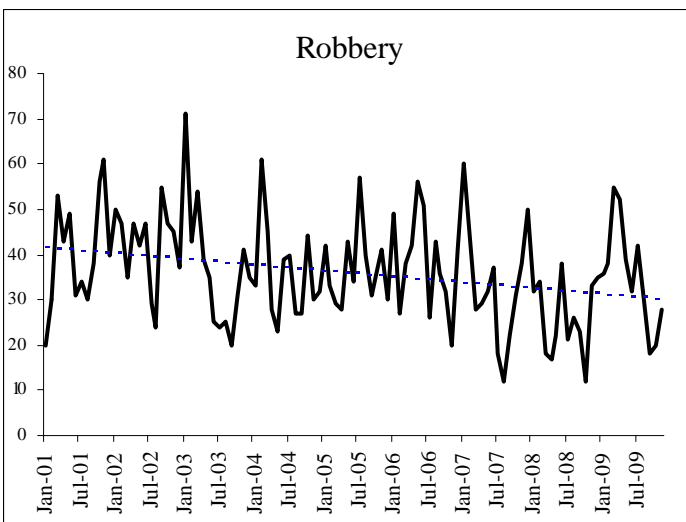
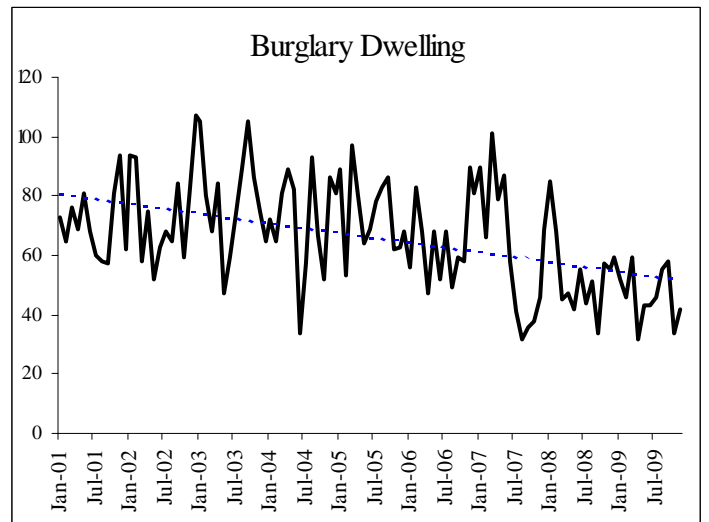
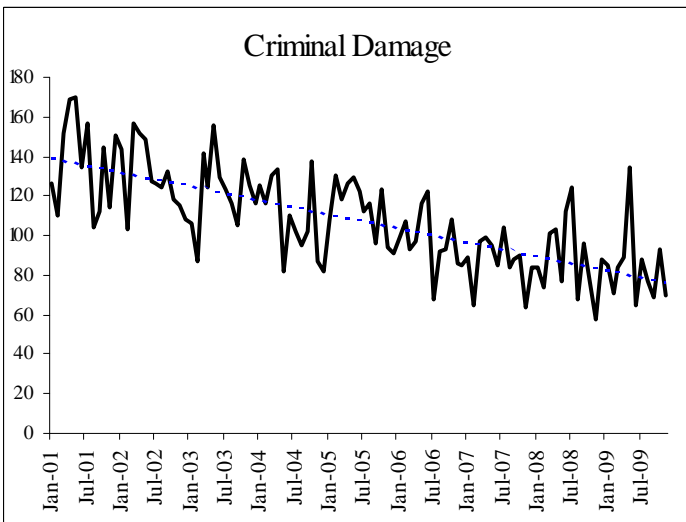
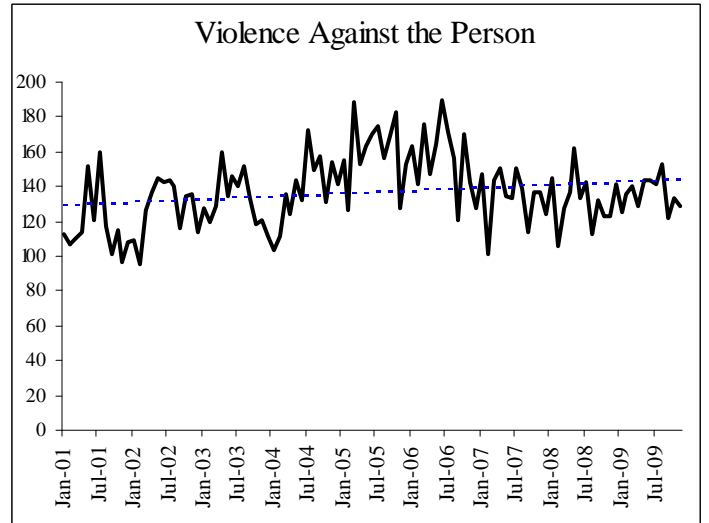
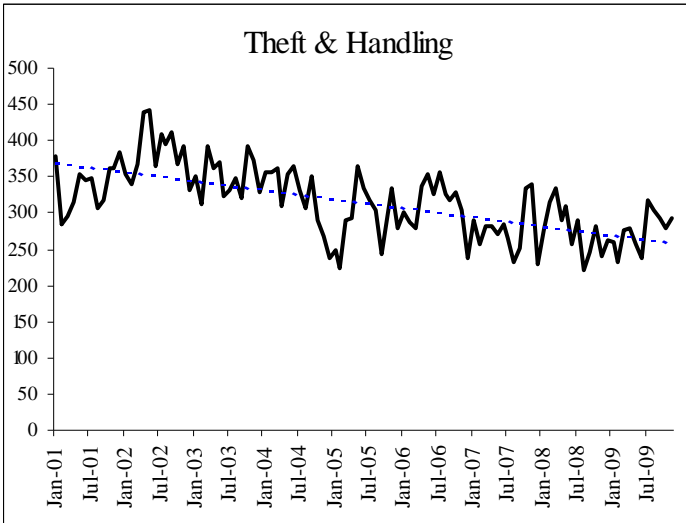
Figure 1. – Quarterly trends for total notifiable offences in Wandsworth and the three sectors since 2006/07.



## ***Crime patterns in the Putney & Roehampton area***

9. **Type of offences.** Theft and handling accounted for 40% of all offences in the Putney sector between April and November 2009. This was made up largely of motor vehicle crime (37%), other theft (34%), taking of pedal cycles (13%) and theft from shops (10%). The crime type that accounted for the second highest proportion of total crime was violence against the person with 20%. These offences were mostly either common assault or assaults with injury. Criminal damage accounted for 13%, burglary 12%, robbery 5% and drugs offences 5%. Other categories including fraud, sexual offences and other notifiable offences accounted for a combined total of around 5%. The offence breakdown this year is similar to the same period last year. The proportion of theft and handling offences has increased marginally (39% in 2008/09 to 40% in 2009/10) and the proportion of violence against the person and robbery has also increased slightly. The proportion of burglary and drug offences has dropped in the area when compared to other crime types.
  
10. **Long-term trends.** Before looking at current trends in the Putney sector it is important to gain an understanding on long-term trends for the key crime categories outlined in paragraph 9. Figure 2 displays the trend in key crime types and total notifiable offences since January 2001. Total notifiable offences show a steady downward trend over this period. The average number of offences recorded in the Putney sector per month decreased from 816 in 2001, to an average of 677 offences per month in 2009. Theft and handling, criminal damage, burglary and robbery also show very positive downwards trends. Violence against the person is the only category to show a slightly increasing trend, largely due to a spike in recorded offences in late 2005 / early 2006. Since this period the number of recorded offences shows a consistent trend.

Figure 2. – Long-term trends for key categories and total notifiable offences in the Putney Sector - January 2001 to November 2009



## *Crime patterns in the Putney & Roehampton area*

11. **Current trends and ward statistics.** Figure 3 shows the number of offences recorded in each ward of the Putney sector between April 2009 – November 2009, the change in offences committed and the percentage change compared to the same period last year. This provides an understanding of which areas of the Putney sector are showing improving crime levels and for what crime types, compared to those areas showing an increase in crime.
12. Overall total notifiable offences in the Putney Sector showed an increase of 5% (284 offences) compared to the same period the previous year. This is in line with the borough wide trend. East Putney saw the most significant increase in terms of percentage increase, 16% (82 offences). Crime in Southfields increased by 13% (108 offences) and West Hill 12% (64 offences). Crime in Thamesfield and Fairfield stayed more or less the same, with small reductions in both West Putney and Roehampton wards.
13. Recorded robbery offences showed a substantial increase in the Putney sector during the first 8-month period of 2009/10. 74 more robberies were recorded in the area, an increase of 37% on the previous year. This was due to an increase of around 20 robberies in each of the following wards; Thamesfield, West Hill, East Putney and Roehampton. 85% of robberies in the Putney sector are personal robberies, 15% commercial robberies - unchanged from the previous year. Despite this increase, raw figures suggest robberies decreased in the area in December, and have been decreasing for some months after an initial spike between April and June.
14. Violence against the person and theft & handling offences has also shown an increase in the Putney sector, both increasing by 7% on the same period the previous year. 154 more theft & handling offences were recorded due to increases in Thamesfield, Fairfield, Southfields, West Hill and East Putney. Violence against the person mainly increased in Southfields, East Putney and Roehampton, although small decreases occurred in Fairfield and West Hill.
15. Major crimes that showed reductions included residential burglary (2% / 7 offences), sexual offences (4% / 3 offences) and drug offences (15% / 48 offences). Thamesfield showed a significant reduction of 39 fewer residential burglary offences during this period (41% lower than the same period the previous year). The decrease in residential burglary in the Putney sector compares to a borough wide average ward increase of 18% (10 offences per ward). However, raw figures again suggest burglary is on a downward trend since a spike earlier in the year, and has again shown further reductions in December in both the Putney sector and borough wide.

*Crime patterns in the Putney & Roehampton area*

Figure 3. – Figures for major crime categories and total notifiable offences in the Putney sector compare to the same period last year

	Residential Burglary*				Robbery				Criminal Damage			
	Apr - Nov 2008	Apr - Nov 2009	Change	% Change	Apr - Nov 2008	Apr - Nov 2009	Change	% Change	Apr - Nov 2008	Apr - Nov 2009	Change	% Change
<b>Putney/Roehampton Sector</b>												
Thamesfield	94	55	-39	-41%	25	46	21	84%	128	77	-51	-40%
Fairfield	66	82	16	24%	38	38	0	0%	112	118	6	5%
Southfields	44	51	7	16%	48	44	-4	-8%	112	127	15	13%
West Hill	26	23	-3	-12%	18	35	17	94%	80	130	50	63%
East Putney	60	59	-1	-2%	13	31	18	138%	72	87	15	21%
West Putney	38	54	16	42%	27	28	1	4%	83	89	6	7%
Roehampton	57	54	-3	-5%	32	53	21	66%	143	107	-36	-25%
Wandsworth ward average	56	67	10	18%	36	44	8	22%	99	98	0	0%
<b>Total Putney/Roehampton Sector</b>	<b>385</b>	<b>378</b>	<b>-7</b>	<b>-2%</b>	<b>201</b>	<b>275</b>	<b>74</b>	<b>37%</b>	<b>730</b>	<b>735</b>	<b>5</b>	<b>1%</b>

	Violence Against the Person				Theft & Handling				Motor Vehicle Crime**			
	Apr - Nov 2008	Apr - Nov 2009	Change	% Change	Apr - Nov 2008	Apr - Nov 2009	Change	% Change	Apr - Nov 2008	Apr - Nov 2009	Change	% Change
<b>Putney/Roehampton Sector</b>												
Thamesfield	157	170	13	8%	580	642	62	11%	137	148	11	8%
Fairfield	182	162	-20	-11%	394	432	38	10%	128	152	24	19%
Southfields	146	169	23	16%	310	364	54	17%	133	131	-2	-2%
West Hill	139	137	-2	-1%	170	191	21	12%	82	100	18	22%
East Putney	70	94	24	34%	188	211	23	12%	79	88	9	11%
West Putney	133	142	9	7%	217	200	-17	-8%	100	81	-19	-19%
Roehampton	230	260	30	13%	255	228	-27	-11%	117	97	-20	-17%
Wandsworth ward average	172	182	10	6%	342	345	3	1%	125	117	-8	-6%
<b>Total Putney/Roehampton Sector</b>	<b>1057</b>	<b>1134</b>	<b>77</b>	<b>7%</b>	<b>2114</b>	<b>2268</b>	<b>154</b>	<b>7%</b>	<b>776</b>	<b>797</b>	<b>21</b>	<b>3%</b>

	Drug Offences				Sexual Offences				Other Notifiable Offences			
	Apr - Nov 2008	Apr - Nov 2009	Change	% Change	Apr - Nov 2008	Apr - Nov 2009	Change	% Change	Apr - Nov 2008	Apr - Nov 2009	Change	% Change
<b>Putney/Roehampton Sector</b>												
Thamesfield	27	22	-5	-19%	10	9	-1	-10%	5	10	5	100%
Fairfield	58	54	-4	-7%	10	9	-1	-10%	7	12	5	71%
Southfields	55	57	2	4%	10	10	0	0%	7	10	3	43%
West Hill	25	25	0	0%	8	6	-2	-25%	10	9	-1	-10%
East Putney	26	25	-1	-4%	8	2	-6	-75%	9	1	-8	-89%
West Putney	40	23	-17	-43%	10	11	1	10%	10	4	-6	-60%
Roehampton	95	72	-23	-24%	12	18	6	50%	9	21	12	133%
Wandsworth ward average	49	55	6	12%	12	12	-1	-5%	10	12	2	18%
<b>Total Putney/Roehampton Sector</b>	<b>326</b>	<b>278</b>	<b>-48</b>	<b>-15%</b>	<b>68</b>	<b>65</b>	<b>-3</b>	<b>-4%</b>	<b>57</b>	<b>67</b>	<b>10</b>	<b>18%</b>

	Fraud & Forgery				Total Notifiable Offences			
	Apr - Nov 2008	Apr - Nov 2009	Change	% Change	Apr - Nov 2008	Apr - Nov 2009	Change	% Change
<b>Putney/Roehampton Sector</b>								
Thamesfield	25	41	16	64%	1137	1147	10	1%
Fairfield	52	58	6	12%	956	1007	51	5%
Southfields	42	36	-6	-14%	806	914	108	13%
West Hill	23	11	-12	-52%	531	595	64	12%
East Putney	15	19	4	27%	511	593	82	16%
West Putney	11	14	3	27%	612	593	-19	-3%
Roehampton	37	41	4	11%	891	879	-12	-1%
Wandsworth ward average	30	31	1	2%	845	885	40	5%
<b>Total Putney/Roehampton Sector</b>	<b>205</b>	<b>220</b>	<b>15</b>	<b>7%</b>	<b>5444</b>	<b>5728</b>	<b>284</b>	<b>5%</b>

\* Commercial burglary not included in these figures but included in total notifiable offences

\*\* Motor vehicle crime also included within theft & handling, only included once with total notifiable offences

## Crime patterns in the Putney & Roehampton area

16. Business crime. Two town centre areas exist within the Putney sector; Putney town centre, which is mainly located in Thamesfield but also crosses over into East Putney, and Wandsworth town centre, located on the border between Fairfield and Southfields. 12% of crime in the Putney sector is recorded in Putney town centre and 9% recorded in Wandsworth town centre. Therefore around 1 in 5 offences recorded across the sector takes place in one of the two town centre areas. 6.7% of crime recorded in Wandsworth took place in either Putney or Wandsworth town centres.
17. Key crime types recorded in Putney town centre include: other theft (30% of all crime), violence against the person (18%) and shoplifting (16%). Levels of violence against the person are low in Putney town centre compared to the other four centres across the borough. However the second highest levels of shoplifting occur in Putney town centre with around 150 offences recorded per year. A significant volume of other theft offences is recorded in Putney town centre averaging between 250-300 offences per year. The proportion of violence against the person offences in Wandsworth town centre is higher than Putney (24% of all crime), although other theft and shoplifting is much lower. Locations will be covered in the geographical distribution paragraphs.
18. Detection Rates. A crime is detected if a suspect has been identified and interviewed and there is sufficient evidence to bring a charge. Detection rate figures for the Putney sector and the seven wards within the area are outlined in figure 4. Detection rates for total notifiable offences in the Putney sector (17.8%) are below the borough wide rate of 20.3%. This is largely due to a lower detection rate for violence against the person offences and motor vehicle crime. However detections for residential burglary, criminal damage and robbery are above the borough wide total.

Figure 4. - Putney sector detection rates by ward for the period April to November 2009

	Residential Burglary			Criminal Damage		
	Offences	Sanctioned Detections	Detection Rate	Offences	Sanctioned Detections	Detection Rate
<b>Putney Sector</b>						
Thamesfield	55	12	21.8%	77	10	13.0%
Fairfield	82	8	9.8%	118	19	16.1%
Southfields	51	7	13.7%	127	6	4.7%
West Hill	23	2	8.7%	130	51	39.2%
East Putney	59	7	11.9%	87	9	10.3%
West Putney	54	5	9.3%	89	13	14.6%
Roehampton	54	6	11.1%	107	14	13.1%
Total Putney Sector	378	47	12.4%	735	122	16.6%
Wandsworth	1332	161	12.1%	1967	261	13.3%

	Robbery			Motor Vehicle Crime		
	Offences	Sanctioned Detections	Detection Rate	Offences	Sanctioned Detections	Detection Rate
<b>Putney Sector</b>						
Thamesfield	46	11	23.9%	148	14	9.5%
Fairfield	38	3	7.9%	152	4	2.6%
Southfields	44	9	20.5%	131	2	1.5%
West Hill	35	3	8.6%	100	1	1.0%
East Putney	31	8	25.8%	88	14	15.9%
West Putney	28	9	32.1%	81	3	3.7%
Roehampton	53	7	13.2%	97	2	2.1%
Total Putney Sector	275	50	18.2%	797	40	5.0%
Wandsworth	880	121	13.8%	2340	206	8.8%

*Crime patterns in the Putney & Roehampton area*

	Violence Against the Person			Total Notifiable Offences		
	Offences	Sanctioned Detections	Detection Rate	Offences	Sanctioned Detections	Detection Rate
<b>Putney Sector</b>						
Thamesfield	170	46	27.1%	1147	184	16.0%
Fairfield	162	52	32.1%	1007	188	18.7%
Southfields	169	29	17.2%	914	126	13.8%
West Hill	137	38	27.7%	595	127	21.3%
East Putney	94	26	27.7%	593	94	15.9%
West Putney	142	27	19.0%	593	92	15.5%
Roehampton	260	74	28.5%	879	209	23.8%
Total Putney Sector	1134	292	25.7%	5728	1020	17.8%
Wandsworth	3631	1058	29.1%	17695	3590	20.3%

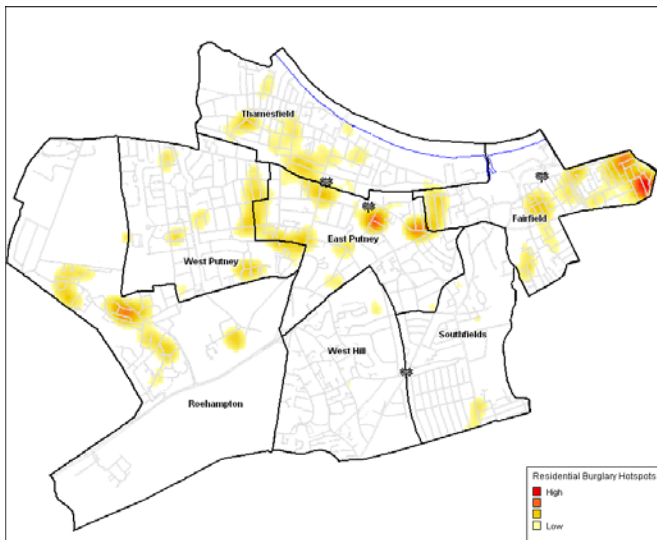
19. **Geographical distribution.** The maps in figure 5 show the clusters of some of the key crime types occurring in the Putney sector – residential burglary, personal robbery, and assaults with and without injury. Maps are not included for business and town centre related crime, as hotspots mainly centre around the two town centre areas. The period covers April to November 2009.
  
20. **Residential burglary.** The Putney sector has seen a small decrease in residential burglary this financial year. However, one area that has seen an increase is Fairfield, with 16 more offences this year than for the same period the previous year. A clear hotspot is visible in Fairfield, located around the residential streets either side of St. John’s Hill on the eastern part of the ward, including Brussels, Louvaine, Vardens and Sangora Road. 51 residential burglaries have been recorded in this area between April and November 2009. A smaller hotspot is also evident in East Putney, located at Portinscale Estate where nine burglary dwelling offences were recorded.
  
21. **Violence against the person.** This category type has seen a 7% increase in the Putney sector, the majority of which are recorded as assaults with or without injury. As evident in the hotspot maps, assaults without injury are predominantly occurring in one of two locations: Wandsworth town centre and the Ashburton Estate in West Putney. 32 offences were recorded in Wandsworth town centre for the current period, mainly taking place within the Southside Shopping Centre. 34 offences were recorded within the Ashburton Estate. For the more serious assaults whereby an injury was recorded, the key hotspot is located at Putney town centre. 56 offences were recorded during this period, largely linked to the night-time economy, taking place within or directly outside of a small number of licensed premises.
  
22. **Personal robbery.** Robbery is the category that showed the most significant increase in the Putney sector during this period, with an increase of 37% compared to the same period the previous year. Of the 275 robberies recorded, 234 were robberies of the person. Hotspots are predominantly located around town centre areas and some housing estates including Clarence Lane and to a lesser degree the Alton Estate.
  
23. **Motor vehicle crime.** Overall motor vehicle crime has seen a slight increase in the Putney sector this period. Theft from motor vehicle increased from 538-recorded offences last year to 592 offences in the current period. Theft of motor vehicles showed a decrease from 238 to 205 recorded offences. A very clear theft from motor vehicle hotspot is evident on Jews Row in Fairfield, with 20-recorded offences in a small cluster. Hotspots are also evident in nearby Coleford Road, Wildcroft Road close to Tibbets Corner in Roehampton, and in the Richmond Road area of Thamesfield. Theft of motor vehicle hotspots are also located

## Crime patterns in the Putney & Roehampton area

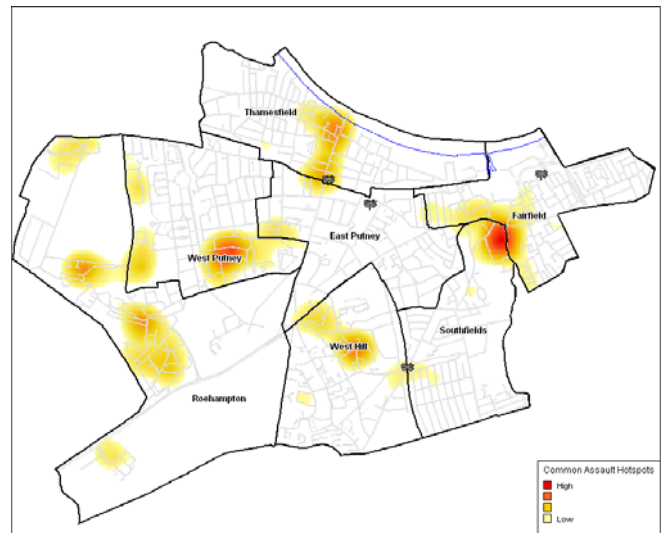
around Jews Row in Fairfield and the residential streets branching off Upper Richmond Road, as well as the Alton Estate in Roehampton.

24. Town-centre related crimes. Three key repeat locations are evident in Putney town centre for a range of offences; the Putney Exchange on Putney High Street, Sainsbury's on Werter Road and the Fez Club and direct area on Upper Richmond Road. Within Wandsworth town centre the majority of offences are recorded at the Southside Shopping Centre, Eliot & Wentworth Court Flats on Garratt Lane and Sainsbury's on Garratt Lane. Offences recorded at these locations are the town centre crime types discussed in paragraph 17, which are linked to the day or night-time economy.

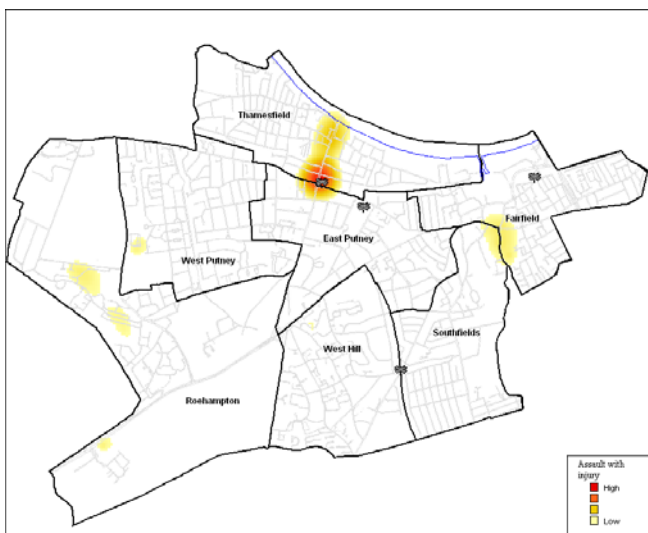
Figure 5. – Hotspot maps in the Putney sector for key crime types, April to November 2009



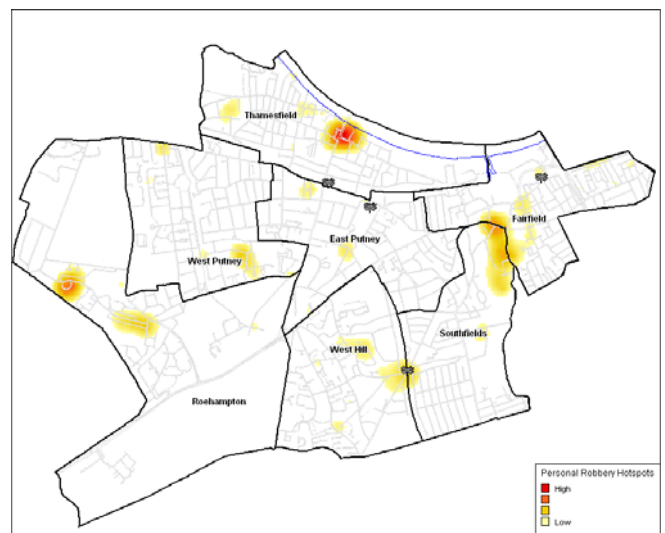
Residential Burglary: April – November 2009



Assault without Injury: April – November 2009



Assault with Injury: April – November 2009



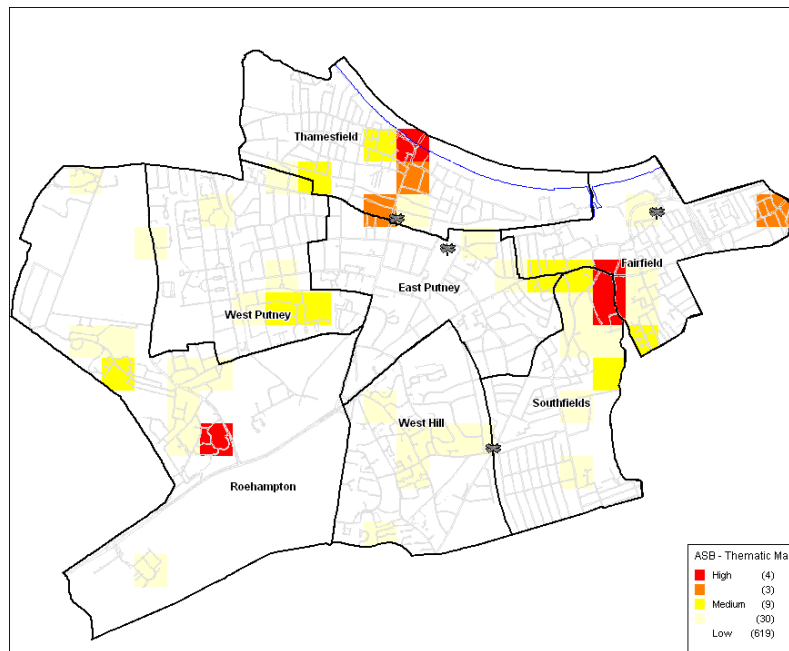
Personal Robbery: April – November 2009

This map is reproduced from Ordnance Survey material with the permission of Ordnance Survey on behalf of the Controller of Her Majesty's Stationery Office. © Crown Copyright. Unauthorised reproduction infringes Crown Copyright and may lead to prosecution or civil proceedings. Wandsworth Council 100019270 2010

25. **Temporal profile.** The temporal profiles provide us with a better indication of when key crime types in the Putney sector are likely to occur. Residential burglary peaks on a Tuesday, Wednesday and Friday with over half of all offences recorded as taking place at some point between 10am and 4pm. Assault without injury shows no clear peak days or times, whilst assaults with injury are more strongly linked to the night-time economy, peaking in the early hours of Saturday and Sunday mornings. Personal robbery shows a clear peak on a Wednesday (21% of all offences), Thursday (16%) and Sunday (16%). Peak times vary, with small peaks between 10am – 12pm, 3pm – 4pm and 9pm – 2am. Motor vehicle crime shows no clear peak days with a very even spread of offences recorded throughout the week. Clear peak times are however evident, with 45% of all offences recorded as being committed between 12pm – 4pm, and overall 70% of offences committed between 9am – 6pm.
26. **Anti-social behaviour.** We can review police anti-social behaviour reports in order to further our understanding of crime and disorder taking place in the Putney sector. Anti-social behaviour can be defined as any aggressive, intimidating or destructive activity that damages, destroys or affects another person's quality of life. In terms of the police recording systems, this covers a wide variety of different incidents ranging from street drinking and substance misuse to environmental damage and litter. Therefore breaking down these incident reports into sub-categories is important in gaining more of an understanding of the problem. Most incidents are reported by the public and then deal with by the police and safer neighbourhood teams accordingly depending the type and severity of the incident.
27. **Volume.** Between October and December there was 3461 anti-social behaviour incidents recorded by police in Wandsworth. 29% (1002) of those incidents were recorded in the Putney sector, which compares to 40% (1393) in the Tooting sector and 31% (1066) in the Battersea sector. Therefore around about the same levels of ASB was recorded in the Putney sector as Battersea, with recorded incidents in the Tooting sector significantly higher.
28. **Type of incidents.** Most anti-social behaviour incidents recorded by police are described as rowdy / inconsiderate behaviour. Between April – November 63% of incidents in the Putney sector were recorded as rowdy / inconsiderate behaviour. The next most frequent category was rowdy / inconsiderate neighbours (9%), street drinking (8%) and due to the time of year, fireworks (6%). Noise related incidents also accounted for 6% of the total ASB recorded in the area. Overall peak days for incidents to occur was the weekend period, particularly for rowdy / inconsiderate behaviour reports, rowdy / inconsiderate neighbours, noise, substance misuse and street drinking.
29. **Location.** Figure 6 displays areas where recorded anti-social behaviour incidents are high in the Putney sector. The two areas of highest intensity are both Putney and Wandsworth town centres. ASB is also high on the southern part of the Alton Estate in Roehampton and fairly high around St. Johns Hill in Fairfield, close by to Clapham Junction.

## ***Crime patterns in the Putney & Roehampton area***

**Figure 6. – Thematic map in the Putney sector for all anti-social behaviour incidents recorded by the MPS, April to November 2009**



This map is reproduced from Ordnance Survey material with the permission of Ordnance Survey on behalf of the Controller of Her Majesty's Stationery Office. © Crown Copyright. Unauthorised reproduction infringes Crown Copyright and may lead to prosecution or civil proceedings. Wandsworth Council 100019270 2010

30. **Late night disorder.** Wandsworth Council's CCTV Control Room staff monitor the five town centres from 10pm to 3am on Friday and Saturday nights. They are linked into the Police control room and can assist them in their response to any incident recorded on the cameras. During the period of April to December 2009, there were 105 incidents detected through CCTV on Friday and Saturday nights in the Putney and Roehampton area. Overall, these incidents represented 27% of all incidents recorded across the borough in that period. 54% of the incidents detected involved public disorder or violence: based on the CCTV operators' observations, 24 incidents were classified as incidents causing unrest, alarm or distress; there were also 18 affrays and 15 assaults including one ABH. Alcohol misuse was revealed as an important contributor to the level of late night disorder. In fact, 47 incidents were linked to alcohol misuse (where licensed premises have been mentioned or a state of drunkenness have been recorded) of which 75% involved violence. Overall, 40 people were arrested for incidents recorded on CCTV. Arresting offences included affray, assault, ABH, public order, criminal damage, drugs possession and possession of an offensive weapon.

### **Initiatives to combat crime in the Battersea area.**

31. **MPS initiatives.** The following provides examples of how Safer Neighbourhood ward teams have tackled crime and disorder in the Putney and Roehampton Sector.
32. **Burglary.** Regular proactive patrols under Operation 'Bumblebee' specifically targeted within wards identified as suffering recent offences by Borough Intelligence Unit to deter & detect burglary suspects. These compliment, and are in addition to, daily uniform patrols by the teams in recognised vulnerable areas.
33. Partnership work with Wandsworth Council, in particular their Crime Prevention Advisor, led to the design and production of a new crime prevention leaflet that provides advice around specific aspects of home security (i.e., doors and windows). This is being distributed

on wards to target harden, raising public awareness of home security. Elderly & vulnerable ward residents have been identified and a list has been compiled with the assistance of local residents and NHW co-ordinators. Personal reassurance visits to each person identified have begun and are ongoing to ensure they are aware of how to keep themselves safe and their home secure, especially regarding distraction offences.

34. Borough initiative to tackle & prevent multi-occupancy burglary offences commenced. Involves distributing specifically designed letters to residents and landlords, in order to encourage them to upgrade poor communal door locks. Site visit conducted on the new Queen Mary's development, and residents urged to form a committee and a NHW scheme.
35. Anti-Social Behaviour. ASB continues to be a priority for the sector. For example in West Putney: Youth club engagement workshops and sessions, including Black History Month in October; KICKz programme on the Ashburton estate; dedicated schools patrols targeting hangouts following the end of school under Operation Protect and six Acceptable Behaviour Contracts signed by young people on the ward.
36. Across the borough there were dedicated patrols during the bonfire night and Halloween period and extensive partnership work that again successfully contained disorder.
37. West Hill ward team issued Section 59 warnings re ASB on mini motos/mopeds in Whitlock Drive; pre planned operation conducted on a number of occasions at Granville Road hotspot to combat bicycles and motorcycles riding on the footway; warrants being planned re ASB/theft of pedal cycles by known family in Littlecote Close and ANPR operations on West Hill.
38. Roehampton ward continue to tackle the street drinkers problem, for example in October the ward team undertook a week of action where the street drinkers were engaged with at every opportunity. Eleven Section 27 forms were issued, 2 arrests made and there were 32 stops recorded. A street meeting was held on the outside the Library and two residents from Allbrook House stated that it had been much quieter over the past week due officer's action. This problem will remain a focus.
39. On Southfields ward the problem of ASB by youths in and around Merton Road, junctions of Burr Road and Replingham Road were tackled by: Stakeholder meeting held November 2009 regarding issues with youths from Southfields Community College at the bus stop and on bus route 156; TOCU agreed they would patrol the route and bus stop at school finish times; Search arch operation executed in the College; Mosquito device still in operation at the bus stop; TfL ran a series of assemblies and workshops to educate the youths and youth football competition event held in the summer to further include and educate local youths.
40. On Fairfield ward ASB around 87 Oakhill Road SW15, became a priority during 2009. After meetings and consultation with the Local Authority, 8 youths were identified and 6 agreed to sign Acceptable Behaviour Contracts (ABC's). There has been a significant decrease in the number of calls to police. The ABC's will soon come to a close and will be reviewed by Police in conjunction with the Local Authority.
41. Youth engagement is viewed as pivotal in reducing anti-social behaviour and increasing skills and self-esteem amongst the young. All of the ward teams are involved in youth work with projects such as Kickz attracting often disenfranchised individuals who benefit from working as part of a team. This is again reflected by a reduction in calls from the public with regard anti social behaviour.

## ***Crime patterns in the Putney & Roehampton area***

42. Drug Dealing. The ward teams continue to tackle the problems around drug dealing. For example, West Putney and Roehampton ward teams ran a number of operations, leading to two arrests; Cannabis warnings and £80 fines have been issued following successful stops across the wards. TSG will support further operations February for three days around areas identified by officers and PCSOs and information coming from our partners and the public that is being targeted by dealers. West Hill ward team have executed search warrants in Augustus Road, Sutherland Grove, Windlesham Grove and in Windlesham Grove and arrests made.
43. Motor Vehicle crime. Examples of activity include West Putney, Roehampton, Southfields & West Hill wards concentrating on hotspots with high visibility patrolling and laminated leaflet drops for vehicles parked in these areas, proactive checking of vulnerable vehicles and contacting registered keepers, crime prevention briefings at Southfields Tube, Park Tavern PH and King Georges Park car parks targeting commuters who park locally and running ANPR on West Hill. Residents Association meetings have also been held to give advice and to provide crime prevention packs.
44. Other initiatives. The SNTs run many initiatives specific to their wards. For example Fairfield SNT continues to have strong links with the local business community. Meetings of the Wandsworth Town Centre Partnership, Wandsworth Village Business Group and St John's Hill Business Forum are attended on a regular basis. Fairfield SNT continue to support events organised by these groups which include the Old York Road and Saint Johns Hill Summer Fun Days, both held during September each year. Fairfield SNT have also been involved with the Wandsworth Travel Buddy Scheme from virtually it's inception in July 2008. The Scheme allows adults with severe learning difficulties to travel on public transport. The Team has provided safety talks, attended training sessions and introduced the local Pub Watch to the Scheme in order to provide safe places should the Service Users encounter difficulties in public places.

### **Comments from the Director of Technical Services.**

45. The Director of Technical Services comments that significant efforts have been made by the Police and other partners to address the adverse crime trends which affected the Borough at the beginning of the current financial year. As noted in the report, these efforts have been proving successful as the year has progressed.
46. The Community Safety Division has been active in working with the SNTs, other Police teams and other agencies to tackle identified crime and anti-social behaviour issues. Officers have undertaken targeted road shows throughout the year. Neighbourhood Watch in Putney has received its share of attention with 10 new Watches launched in the Sector since April 2009. Homes in Putney have benefited from crime prevention tips and advertisements in Brightside, whilst first time victims of burglary have continued to receive the offer of a Wandsafe visit and referral to the FLASH security scheme operated by Victim Support. The No Cold Calling Zone, aimed at bogus 'tradesmen', has remained in place and operational in the area around Dover House Road, SW15. Other work aimed at preventing burglaries has included attendance at the Freshers Week at Roehampton University to provide advice to students on securing their accommodation and personal property.
47. The Anti-Social Behaviour Unit has continued to work closely with Housing Department, the Preventions Service, Registered Social Landlords, Police and other agencies to maintain a pro-active approach to reported outbreaks of anti-social behaviour. The issue of anti-social

## *Crime patterns in the Putney & Roehampton area*

behaviour and street drinking in Roehampton is included elsewhere on this agenda, and CSD's work with Police response teams to tackle late night disorder in Putney Town Centre is referred to in paragraph 30.

48. The Police have further strengthened their support for CCTV, and the ANPR (Automatic Number Plate Recognition) machine has been re-instated in the CCTV Control Room at Frogmore. The Retail Radio networks in Putney and Wandsworth continue to be fully supported, with regular liaison between CSD officers, Town Centre Managers and business users. Retail Radio remains popular with participating retailers as it not only links with the CCTV Control Room but also provides real-time, inter-active communication between the retailers when known shoplifters are seen to be entering the area. The more localised Alertbox scheme has continued to be actively used by retailers in Replingham Road, SW15 (Southfields) and has also proved effective in assisting responses to shoplifting. The gating scheme to improve the security of premises backing onto Southfields Yard was completed during the earlier part of the year.
49. The problem of ticket touts operating in Southfields during the Wimbledon Tennis fortnight in July 2009 was again addressed with the Safer Merton Partnership. The effectiveness of the cross-boundary measures put in place in 2008 were recognised in the 2009 Tilley Awards, for which the initiative was the London Regional Winner.
50. The Council's award-winning Safer Stations initiative has continued and included two mainline and two underground stations within the sector and Barnes mainline station adjacent to West Putney Ward. Southfields Station is benefiting from major refurbishment works. The installation of automatic ticket barriers at stations in the sector has improved security.
51. The Street Pastors scheme in Wandsworth Town Centre has continued to ease problems at the end of the school day around Southfields Community College and Southside Shopping Centre.
52. **Conclusion.** Crime in the Putney sector is showing consistent downward long-term trends across most crime categories as well as total notifiable offences. Although this year has seen a slight increase in crime, largely attributed to the recession, significant improvements are evident throughout the latter months of 2009. A large proportion of crime in the Putney sector is recorded in one of the two town centres in the area. The Strategic Assessment 2009/10 identifies that tackling crime in Wandsworth's town centres, particularly during a period of recession is important. Therefore more emphasis will be placed on tackling town centre crime and disorder through the Partnership Plan 2009/10, which includes Putney and Wandsworth town centres.

---

The Town Hall  
Wandsworth  
SW18 2PU

G.K. JONES

Chief Executive and Director of  
Administration (on behalf of the officers  
concerned)

## ***Crime patterns in the Putney & Roehampton area***

3rd February 2010

### **Background Papers**

No background papers were used in the preparation of the paper.

All reports to Overview and Scrutiny Committees, regulatory and other committees, the Executive and the full Council can be viewed on the Council's website ([www.wandsworth.gov.uk/moderngov](http://www.wandsworth.gov.uk/moderngov)) unless the report was published before May 2001, in which case the Committee Secretary Mr. W. McCluskey (Tel. 020 8871 6010); email [bmclluskey@wandsworth.gov.uk](mailto:bmclluskey@wandsworth.gov.uk) can supply a copy if required.